

Contents

The following Help Topics are available:

Slide Show On-Line Help Contents

To choose a topic using the mouse, point to an underlined topic and click the mouse button. To use the keyboard, press Tab to select an underlined topic and press Enter. For general information on Help, choose "How to use Help" from the Help menu.

For more information, click one of the following category names:

[How Slide Show works](#)

[Using the Tool Bar](#)

[How to display a different collection of images](#)

[Changing the settings in the Configuration screen](#)

[Advanced Configuration Options](#)

[How to Skip Individual Images](#)

[How to Un-install Slide Show](#)

[How to change the delay between images](#)

[How to use Slide Show as a screen saver](#)

[Answers to common questions](#)

[To learn more about the artists and photographers and their work...](#)
[How to reach Second Nature](#)

How Slide Show works

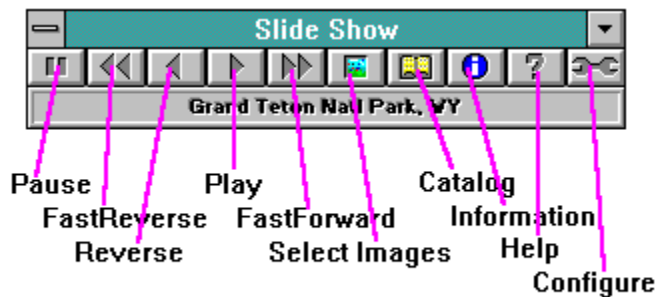
When you installed the Second Nature software, the INSTALL program placed Slide Show in a new directory called SLIDESHW (or whichever directory you typed in its place). INSTALL then created subdirectories to hold all of its accompanying images.

If you kept all the default settings, here's what happens:

- Slide Show will run automatically each time you start Windows. (It's installed in your Windows Startup group.)
- Slide Show shows a new image once each day.
- Slide Show selects images from the files in the "SLIDESHW\IMAGES\new collection" directory.

To begin using Slide Show

You control Slide Show using the Toolbar. If you've installed the program with all the defaults, the Toolbar should be showing on your screen automatically.



If you don't see the Toolbar, you must start Slide Show manually. Follow these steps:

1. In the *Program Manager* window, open the *Startup* group or *Slide Show* group.

2. Double-click on the *Slide Show* icon.



You can also use Slide Show as a Windows or After Dark screen saver. See the screen saver help section for more information.

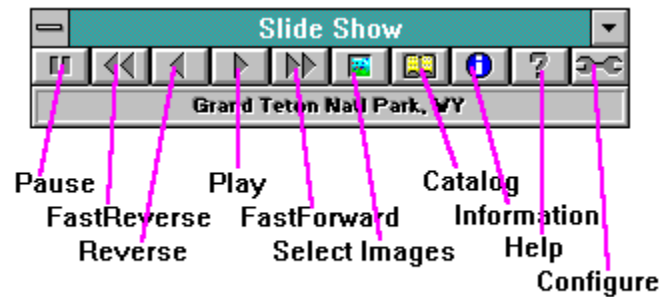
See also:

[Using the Toolbar](#)

[Changing the settings in the Configuration screen](#)

[How to use Slide Show as a screen saver](#)

Using the Tool Bar



Press this button... ...to do this:

Pause Regardless of the delay setting, the current image remains displayed until you release this button, or until you press "fast-reverse," "reverse," "play" or "fast-forward".

Fast Reverse Press this button until the title or filename of the image you want to display appears in the Description line. Slide Show reverts to that image.

Reverse Revert to the previous wallpaper image.

Play Advance to the next wallpaper image.

Fast Forward Press this button until the title or filename of the image you want to display appears in the Description line, then release the button. Slide Show advances to that image.

Select Images Select another image or collection, and see other collections available from Second Nature, including phone numbers and ordering information.

Catalog Displays an on-line catalog of other Second Nature Software collections.

Image Information Displays information about the image and the artist.

Help Read this help file.

Configure Displays the configuration screen. In that screen, you can change any of these Slide Show settings:

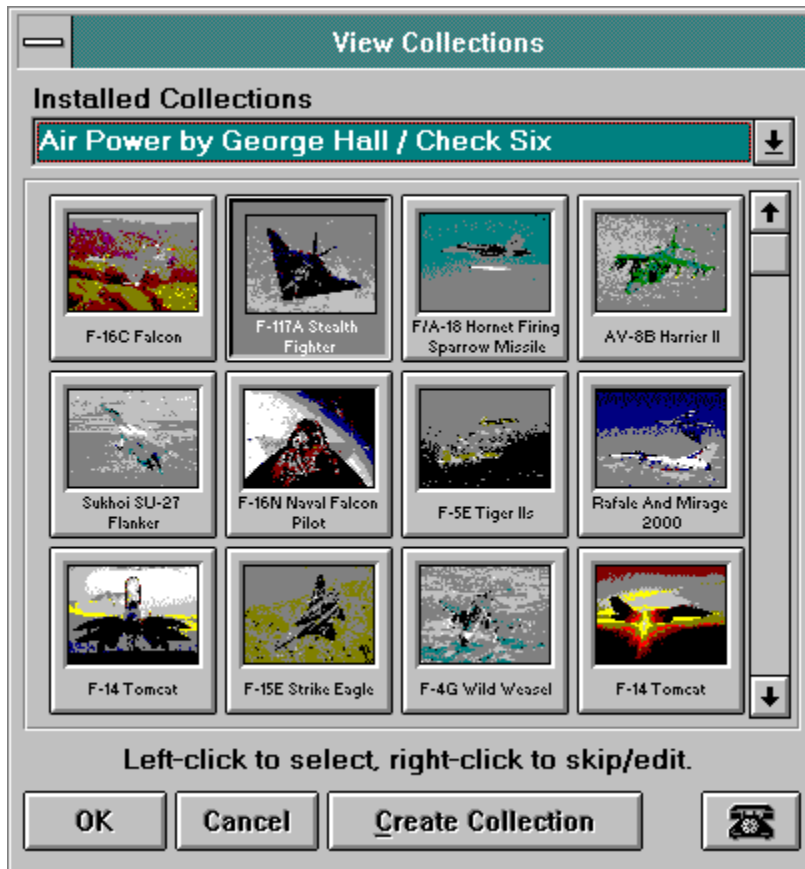
- Placement and special effects of wallpaper and screen saver images
- Delay before changing images
- Image collection
- Pointer and outline styles within Slide Show

See also:

[Changing the settings in the Configuration screen](#)

How to display a new collection of images

1. From the Toolbar, press the "Select Image" button.
2. You'll see the following:



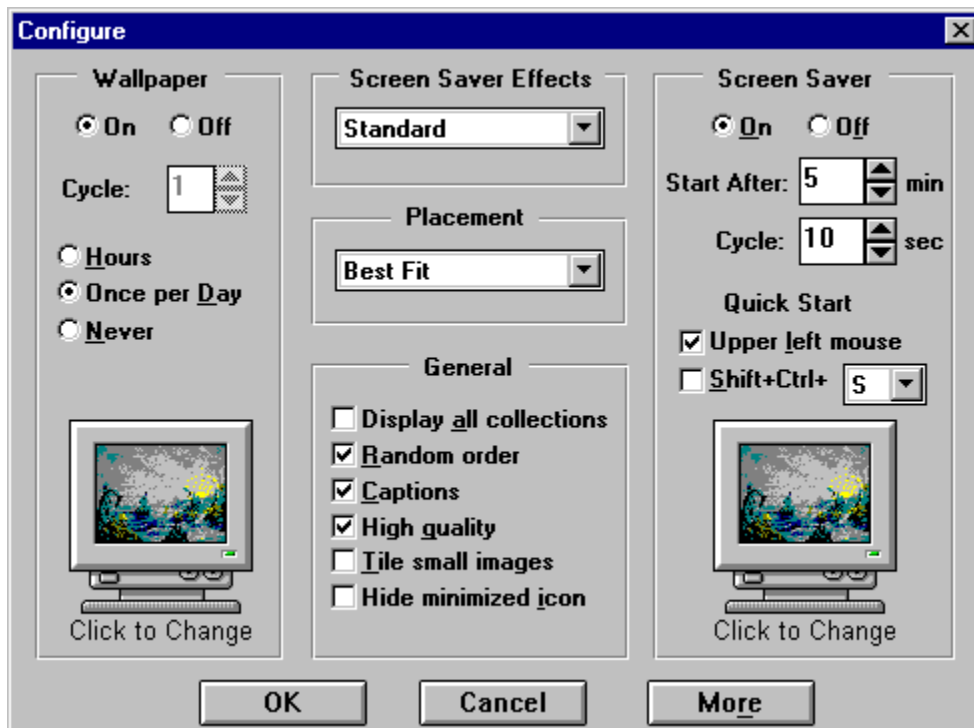
3. Using the combo-box, select the image collection you want to display. Slide Show will display Second Nature image files (.SNX), Windows bitmap (.BMP) files, and .JPG files. Then double-click the image you want to appear first.

See also:

[How Slide Show works](#)

[Changing the settings in the Configuration screen](#)

Changing the settings in the Configuration screen



- "On" or "Off" Turns the wallpaper or screen saver on or off.
- "Placement" Controls the position of the wallpaper or screen saver image on the screen.
[Click here for a description of the options](#)
- "Special Effects" Controls the way screen saver images are painted on the screen.
[Click here for a description of the options](#)
- "Display All Collections" Causes Slide Show to display all the images from every installed collection, instead of displaying only the images found in the currently selected collection.
- "Random Order" Displays the images in random order.
- "Captions" Displays the image title/caption at the top center of the screen.
- "High Quality" Displays the images using the most appealing dithering algorithm. If this option is turned off, the images don't display quite as well, but they decompress more quickly.
- "Tile Small Images" If checked, Slide Show will tile very small images **even if** the "Placement" field is **NOT** tiled.
- "Hide Minimized Icon" If checked, the Slide Show icon will be hidden when you minimize the program. To restore Slide Show when the icon is hidden,

simply double-click the Slide Show icon in the "Slide Show" Program Manager group.

"Cycle"

Controls the length of time between changes in the wallpaper or screen saver display. By default, Slide Show displays one new wallpaper image each day.

"Quick Start"

Allows you to quickly activate the screen saver by moving the mouse into the lower left corner and leaving it there for two seconds, or by pressing the specified hot-key combination.

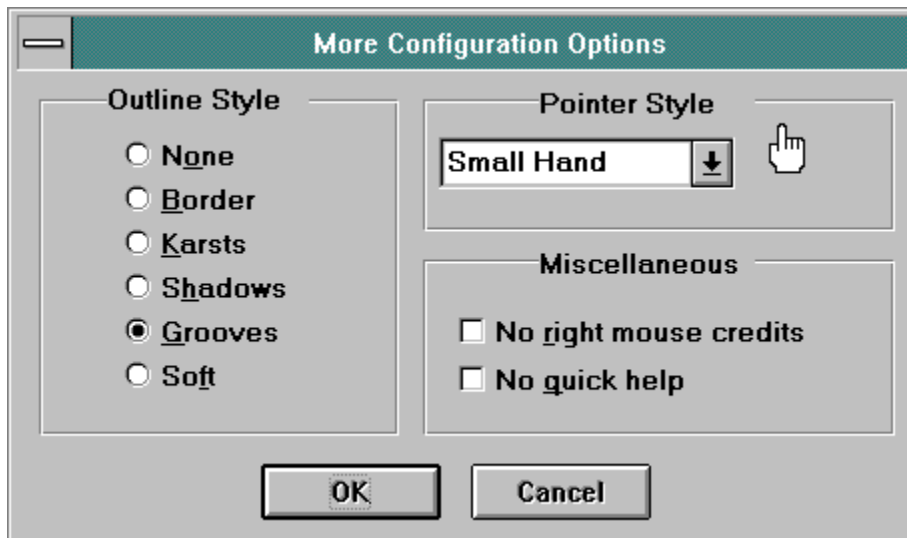
See also:

[How Slide Show works](#)

[How to change the delay between images](#)

[How to display a new collection of images](#)

Advanced Configuration Options



"Outline Style" Sets the style of the borders in this window and the configuration window.

"Pointer Style" Changes the appearance of the mouse cursor. The default is a small, simple hand, but you can choose from three other styles.

"No right mouse credits" Disables the "right mouse click" credits dialog -- when checked, Slide Show will **not** intercept and process right mouse clicks atop the desktop window.

"No quick help" Disables the automatic "quick help" (the pale yellow help box that appears whenever you leave the mouse cursor atop one of our special buttons).

How to Skip Images



Press the "Select Image" button in the Slide Show Toolbar. The "Select Image" dialog will appear. Click the right mouse button atop the image you want to skip. The "Edit Caption" dialog will appear. Check the "Don't show this image" checkbox. Click OK to return from the "Edit Caption" dialog. The image slide will be marked with a red "X" (see above). Click OK again to return from the "Select Image" dialog.

How to Un-install Slide Show



Install

Run the Un-Install program (in the Slide Show group). You'll have the option of removing one or all of the Slide Show collections.

How to use Slide Show as a screen saver

A screen saver prevents your computer screen from "burning in" when you leave it unattended. Windows comes with a default screen saver, but you can substitute *Second Nature* for the Windows screen saver. You can also substitute *Second Nature* for the After Dark screen saver.

As a Windows screen saver...

To use Slide Show as a Windows screen saver:

1. In the Program Manager window, choose *Control Panel*. (Control Panel is usually in a program group called *Main*.)
2. Choose *Desktop*.
3. Find the *Name* option in the Screen Saver field. In the *Name* option box, choose **Second Nature**.
4. Choose *OK*, then close the Desktop and the Control Panel.

As an After Dark screen saver...

To use Slide Show as an After Dark screen saver:

1. Normally, you change the Second Nature screen saver settings using the Configuration dialog from the Slide Show toolbar. However, if After Dark is running, you'll change the Second Nature screen saver settings using After Dark's control panel.
2. From the After Dark control panel, select **Second Nature** as the active screen saver.
3. You can then adjust the Second Nature settings with the displayed controls.

Placement Options

- "Tiled" Fills the screen with multiple copies of the image. Use this option with small images (for example, the .BMP files that come with Windows and reside in your \WINDOWS directory).
- "Best fit" Attempts to fill as much of the screen as possible with one image (without distorting the image). Note that if your screen size is exactly the same size as the image, this will not look any different than No-stretching, below.
- "No stretching" Places one image (actual size) in the center of the screen

Special Effects Options

"Standard"	Displays the image at once with no special effect.
"Mosaic"	Paints the image in a series of randomly placed tiles.
"Vertical curtain"	Begins the image at the sides of the screen and fills in toward the center.
"Horizontal curtain"	Begins the image at the top and bottom of the screen and fills in toward the center.
"Converge"	Begins the image at the edges of the screen and fills in toward the center.
"Reverge"	The opposite of 'Converge'.
"UPC code"	Paints the image in a series of vertical lines filled in at random.
"Puzzle"	Builds the image from randomly placed puzzle pieces.
"Jumble"	Jumbles the image, then reassembles it.
"Paint Can"	"Paints" the image with dripping paint.
"Chips"	Builds the image from triangular chips.
"Portals"	Paints the image using concentric circles.
"Drop Box"	Builds the image from "dropped" boxes.
Vertical Blinds	Paints the image as a series of vertical blinds.
Horizontal Blinds	Paints the image as a series of horizontal blinds.
"Random"	Chooses one of the above methods for each image.

How to change the delay between images

To change the delay time between images:

1. From the Toolbar, press the "Configure" button.
2. Find the *Cycle* option (for Wallpaper **or** Screen Saver).
3. Change the number and unit to a new setting (5 minutes or 1 day or 3 hours, etc.)
4. Choose *OK* to exit the Configuration screen.

See also:

[How Slide Show works](#)

[Changing the settings in the Configuration screen](#)

To learn more about the artists and photographers and their work, or how to order more collections...

With many of our collections, you can learn about the artist or photographer who created the collection by clicking the "Information" button in the Toolbar. If information about the artist is unavailable, you'll see a dialog describing how you can go about ordering other collections.

If you have ideas for other collections or you know of an artist or photographer you'd like to promote, let us know! Send a few nonreturnable pictures, cards, or other examples of the art. Include an explanation of why you enjoy the artist or photographer and any information you have about how we could contact them.

Send it all to:

Second Nature Software
Attn: Dorothy Hitt
1325 Officers Row
Vancouver, WA 98661

How to reach Second Nature

To reach our Automated Information System, with dealer & technical support information, call:

(360) 737-4170 (4 lines, 24 hours)

To **see our online catalog** and **order other collections via the Internet World Wide Web**, use:

www.secondnature.com

as your URL in a world wide web browser such as Netscape or Mosaic.

To learn more about Second Nature, choose the "About" option in the Toolbar's system menu (the close box).

Answers to common questions

Q. How do I make the images look better on the screen?

A. Make sure you're running Windows in 256-color mode. To do this, your video display driver must support 256 colors, not just 16.

Q. How do I find out which video driver I'm using? And if it doesn't support 256 colors, how can I use one that does?

A. To find out which video driver you're using, check your computer's Windows Setup. (You can usually find the "Windows Setup" icon in the Program Manager's Main group.) Look at the "Display" field. If the driver name contains the number 256, it probably supports 256 colors.

If the name of the driver says just VGA, VGA 3.0 or contains the number 16 (not 256), you should probably install a new display driver. You will need to contact your computer or video card manufacturer for instructions as the procedures and names of the appropriate video driver to use varies from machine to machine. Important: Don't change the video driver unless you know which one to pick! If you pick the wrong one, Windows may no longer function!

Q. What is the name of the screen saver module I need to select in the After Dark control panel?

A. **Second Nature** (not *Slide Show*).

Q. Occasionally, my machine will appear to lock up when Slide Show or the screen saver displays one of the images from a custom collection (a collection I have created from my own images, usually .BMP files). Eventually the image is displayed, but only after a very long delay. Why?

A. This problem typically occurs when Slide Show asks Windows to display a 24-bit (true color) or 16-bit image on an 8-bit (256 color) or 4-bit (16 color) display. **Windows can take several minutes** to reduce a 24 bit image (16 million colors) to 8 bits (256 colors). If your display is capable of displaying 24-bit images but is currently set to 256 colors, consider running the Windows system setup application to switch your display driver.

Q: I changed my video driver to the wrong 256-color driver using Windows Setup (probably the "Video Seven 256 Color" driver), and now Windows won't run - all I get is a black screen (possibly with random colored bars or lines). How do I get Windows to run again?

A: Start your computer with a DOS formatted and bootable disk in your A: drive. When you see an A:>, type:

```
C:  
CD \WINDOWS  
SETUP
```

Then use the arrow keys to move up to the "Display" line and select VGA. Then press enter, then Enter again to accept the current version (it may ask you to insert other Windows disks to get files it needs). Once you see the C:> again, windows will now work again. It will still be using only 16 colors, however.

Then, contact your computer and/or video driver manufacturer's technical support to get information on how to install and select the correct 256-color driver for your system.

Q: I get a message bar across the top of the screen when the screen saver tries to run saying "Not enough memory to display image". I think I have plenty of memory. Why?

A: Depending upon your screen resolution and # of colors, each image can take up to 2.4 megabytes to display. If you are using both the wallpaper (Slide Show or other) and screen saver, this can double to 4.8 megabytes, plus a decompression buffer for temporary memory requirements of up to 7.2 megabytes. Here is a table showing how much memory is needed at various screen resolutions & colors:

Screen Size	Number of Colors			
	16	256	32-64K	16 Million
640 X 480	154K	307K	614K	921K
800 X 600	240K	480K	960K	1.44M
1024 X 768	393K	786K	1.54M	2.31M
1280 X 960	614K	1.22M	2.45M	3.66M

Remember to TRIPLE the above numbers to get the *temporary* memory requirements if you are running BOTH the screen saver and wallpaper and DOUBLE the above numbers if you are running only the screen saver OR the wallpaper.

In other words, at maximum size (1280 X 960) and 16 million colors, running both the screen saver and wallpaper, you would need to have above 11 megabytes of memory dedicated to your wallpaper and screen saver alone.

Q: What can I do to decrease memory requirements?

A: You have three options:

- 1) Change the "Placement" option in the Slide Show configuration dialog (click the button that looks like a wrench) to "No Stretching" instead of "Best Fit". This will limit the images to 640X480 (They will be centered on your screen at higher resolutions).
- 2) Change your display driver to one that uses fewer colors. The image quality may drop a little (the images will appear slightly more grainy), but our images are in a proprietary format that stores optimized color tables to make them look as good as possible on only a 256 color system.
- 3) Don't use both the screen saver and wallpaper. Turn off whichever option you like least.
- 4) If you are using After Dark as your screen saver you can save some memory by uninstalling it and using the Windows screen saver.

Q: My display driver is only 256 colors and I have set the Placement option to "No Stretching" and I still get the "Not enough memory to display image" at the top of the screen or a blank screen when the screen saver tries to run. What do I do now?

A: This usually means that you have only 4M (or sometimes 8M) of memory and you do not have a "Swap File" or your swap file is not large enough. A swap file is a place that Windows keeps programs and data that it doesn't currently need in order to free up memory for the current program that needs it. It automatically "swaps" memory in and out of this swap file to keep all the programs you are running happy.

To check and/or change your swap file setting (in Windows 3.1), run the "Control Panel" program (it's usually in the Program Manager "Main" group). Then click on "386 Enhanced". On the right side of the dialog box you'll see a long button called "Virtual Memory". Click it. Next, you'll see a dialog box that tells you what type of swap file you currently have and its size and location. The key item here is the size. It should be at least 3.5 megabytes. If it is less than this, you can try to change it by clicking on the "Change" button. This will "expand" the dialog, showing you a new "recommended size" at the bottom. If this is larger than the current size, click "OK" to make this change (it will ask you to confirm). Note that Windows will not use anything larger than its recommended size, so it does NOT help to override it and type in a bigger number.

If the new recommended size is not larger than 3.5 megabytes, then you probably don't have enough space on your hard disk for a larger swap file, or if you do, the free space is fragmented. You can try running the DOS "Defrag" program (if you are running DOS 6.0 or higher) or Norton's or Central Point's defrag programs if you have them, then repeat the above steps. If that doesn't help, you will need to free up some space on your drive, or, if you are running DoubleSpace or Drivespace or Stacker, reduce the size of the stacked drive to free up space in the non-stacked partition for the swap file (it can't be in the compressed partition). If this sounds like Greek to you, you may wish to ask for help from Microsoft or Stack's technical support department or contact your company's in-house support if you are lucky enough to have one.

Q: I get a GP FAULT or INSUFFICIENT MEMORY error when I try to run Slide Show. What does this mean?

A: Usually, a bad install. One or more of our program or image files are corrupted. This can occur for three reasons:

1) The install disk was bad. If this is the case, you would have received an "UNABLE TO READ FROM DRIVE A (or B)" error when doing the install. You would have been able to continue by pressing "Cancel", but the files would still be bad on your hard disk. You can get a new disk by returning your original to us addressed to "Technical Support" at Second Nature Software, 1325 Officers Row, Vancouver, WA 98661. Let us know that you got the unable to read from Drive A error during install and need a replacement diskette.

2) If you did not receive the above error during install, then the problem is due to one of two things:

1. Corrupted files on your hard disk (run CHKDSK /F or SCANDISK to fix), then reinstall, or

2. Your video driver has a bug that won't let it stretch files to full screen. Try changing our "Placement" option in our Configuration Dialog (press the "wrench" button on the Slide Show Toolbar) to "No Stretching" instead of "Best Fit". If this still doesn't work, you may be using an older display driver and may need to contact the manufacturer of your video card to get an updated driver.

Images

The graphics files that Slide Show displays on your screen. The images that come with Slide Show are special compressed files (.SNX) that take up very little disk space (usually around 40 Kbytes each). In addition to the images that came with the program, Slide Show can display bitmap files (*.BMP format) and .JPG files.

Startup Group

A special Windows group in the Program Manager. Any application in the Startup Group runs automatically whenever you start Windows.

Description line

A line that shows the title or filename of the image Slide Show is currently displaying.

Wallpaper Image

Another name for the graphic images displayed by Slide Show. Slide Show supports .BMP, .JPG and .SNX file formats.

Configuration

Just a high-tech word for the program's setup or configuration information.

Delay

The time that will elapse before Slide Show displays a new image.

After Dark

Slide Show supports (but does not require) the After Dark screen saver for Windows. See the screen saver help section for more information.

